



Corporate Presentation 2025



Mission

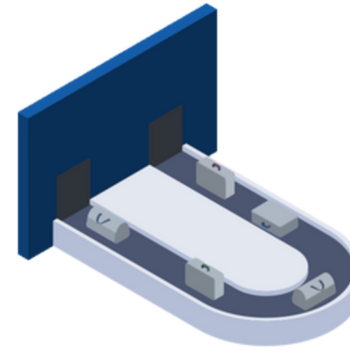
At Sortcon, our mission is to leverage our scientific expertise and cutting-edge technology to improve operations across diverse industries. We are focused to providing businesses of all sizes with tailored solutions that optimize processes, streamline workflows, and boost efficiency and productivity. Through our commitment to scientific innovation, collaboration, and a customer-centric approach, we strive to deliver superior results and empower our clients to stay ahead of the competition. Our goal is to be a trusted partner for businesses seeking to enhance their operations and achieve their full potential in a rapidly evolving world.

Vision

At Sortcon, we are putting effort to transforming industries through state-of-the-art science, a focus on efficiency and productivity. Our vision is to be a leader across multiple sectors, leveraging our expertise and the latest advancements in automation, mechanics, and software to streamline operations, reduce costs, and deliver superior results for our customers. Through our commitment to innovation, collaboration, and a customer-centric approach, we strive to empower businesses of all sizes to optimize their processes and achieve their full potential.



We Work For



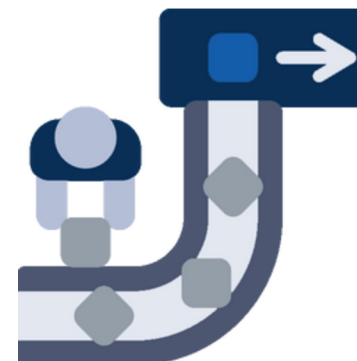
Airport



Intralogistics



Warehouse



E-Commerce



Who We Are

At Sortcon, we are a leading technology company with an innovative approach and a solution-oriented vision, delivering tailored products and services to a wide range of industries. With a strong team of over 150 professionals and a 13,000 m² state-of-the-art production facility, we add value to various sectors, including intralogistics, logistics, warehouse management, manufacturing facilities, airports, and e-commerce operations.

We handle every stage of our turnkey projects in-house, including automation, software, production, installation, commissioning, and maintenance. This enables us to provide our customers with superior quality and complete reliability, helping them stand out in their respective industries.

Our expertise in developing customized solutions tailored to industry-specific and customer needs allows us to bring the technologies of the future to life today, designing systems that enhance efficiency. At Sortcon, we strive to stay one step ahead with our strong team and innovative solutions.

Solutions



Manual Systems

Sortcon's manual sorting conveyor systems are engineered for durability and ease of operation, providing an economical solution for various sorting needs. Whether you require a manual conveyor belt system or manual roller conveyor systems, our systems are designed to improve efficiency while reducing operational costs.



Loading-Unloading Systems

Sortcon's advanced loading and unloading solutions are designed to streamline your workflow and minimize downtime, offering efficient systems tailored to various industries and operational needs. Whether you're looking for container loading and unloading conveyors or truck loading unloading conveyors,



Conveyor Systems

Achieve smooth logistics with Sortcon's innovative sortation systems, tailored to meet the unique needs of your warehouse operations. Whether you need sorting conveyors, high-capacity automated sorters, or sorting systems for non-stackable items, Sortcon provides flexible and efficient solutions.



Pallet Transportation Systems

Sortcon's pallet transport systems are designed to enhance warehouse operations, increasing efficiency while reducing operational costs. Whether you need pallet handling systems, or a pallet conveyor handling system, Sortcon provides flexible and automated solutions tailored to your specific needs.



Sorting Systems

Sortcon's automated sortation systems deliver outstanding performance, reducing manual labor and improving throughput. For parcel handling, our parcel sortation systems and sortation conveyor systems guarantee seamless logistics and quick delivery times. Invest in sortation equipment that promotes operational excellence and ensures a short ROI period.



DWS Systems

A well-engineered DWS system can automatically capture product dimensions, weight, and barcode data with exceptional precision. This not only ensures reliable data entry but also significantly reduces manual errors, saving both time and operational costs.



AS/RS Systems

Automated Storage and Retrieval Systems (AS/RS) are transforming modern warehousing and logistics by offering intelligent, computer-controlled solutions for efficient material handling. Whether it's pallet storage, small parts, or high-throughput operations, AS/RS solutions provide exceptional speed, precision, and space utilization.



Sortcon NSS | Z Sorter



Sortcon MDS | Swiveler Wheel Sorter



Telescopic Conveyor



Belt Conveyors



Roller Conveyors



Divider Equipment



Manual Equipment



Sortcon NSS | Z Sorter

Z sorter is a highly efficient automated system designed to streamline sorting processes in logistics, warehousing, and distribution centers. Using an advanced Z type sorting system, these conveyors optimize material flow by accurately directing products to their designated destinations. Their modular design ensures flexibility, making them suitable for various industries, including e-commerce and parcel handling.

Fast Troubleshooting Capability

In the event of a malfunction, the module can be quickly and easily removed thanks to its plug-and-play design. It automatically performs IP assignment and the system becomes active.

Expandable Chute Option

The number of sorting chutes can be increased according to the size of your business.



Data Capture & Uninterrupted Operation

With the integrated DWS system, you can automatically capture parcel dimensions, weight, and barcode data. Thanks to the UPS infrastructure, your operations continue smoothly without interruption.

Wide Product Range

Sortcon NSS is capable of handling envelope-type packages, mails and parcels weighing less than 5kg.



Sortcon MDS | Swiveler Wheel Diverter

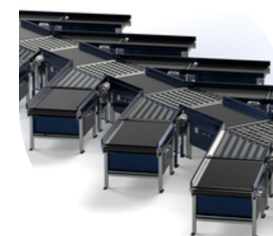
A swivel wheel sorter is an advanced sorting solution designed to improve efficiency in automated material handling systems. Using a series of rotating wheels, this system smoothly diverts packages, parcels, and products to their designated lanes, making it an essential component in logistics, warehousing, and e-commerce fulfillment centers.

Ease of Use and Safety

It can be integrated into your existing workflow seamlessly, minimizing disruptions and enabling faster deployment.

The Low-maintenance Structure

It reduces the need for frequent servicing, keeping your operations smooth and cost-effective in the long term.



Operational Safety

Enhancing productivity without risking the safety of your staff.

Expandable Chute Option

The number of sorting chutes can be increased according to the size of your business.



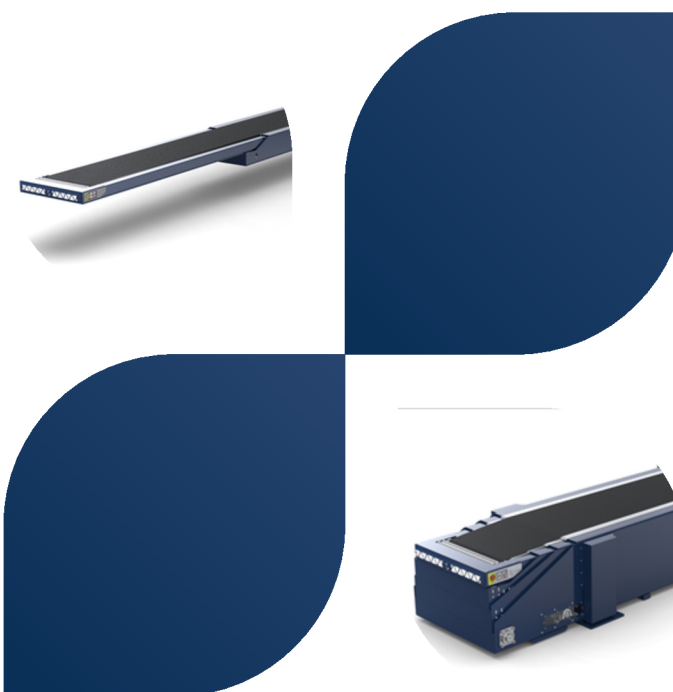
Telescopic Conveyor

Enhanced Safety

Our telescopic conveyor prioritize operator safety with comprehensive coverage of moving parts, minimizing risks during loading and unloading processes for trucks and trailers.

Optimized Efficiency

Streamlined operations and remote control functionality maximize productivity without compromising safety, enhancing workflow efficiency during material handling.



Real-time Monitoring

Gain valuable insights into system performance through remote diagnostics and continuous monitoring, enabling proactive issue detection and timely maintenance scheduling to minimize downtime.

Mobile-Enabled Management

Seamlessly integrate our systems into operations with mobile-enabled remote management, allowing for precise positioning adjustments and optimizing material handling processes for trucks, trailers, and other applications.



Belt Conveyors

In conveyor design, precision is paramount, and our industrial conveyor belt systems exemplify this principle. Our meticulously engineered components, including the stainless steel conveyor belt and chain conveyor belt, ensure impeccable alignment, flawless material handling, and reduced spillage. This boosts operational efficiency and extends maintenance intervals, saving valuable time during production.



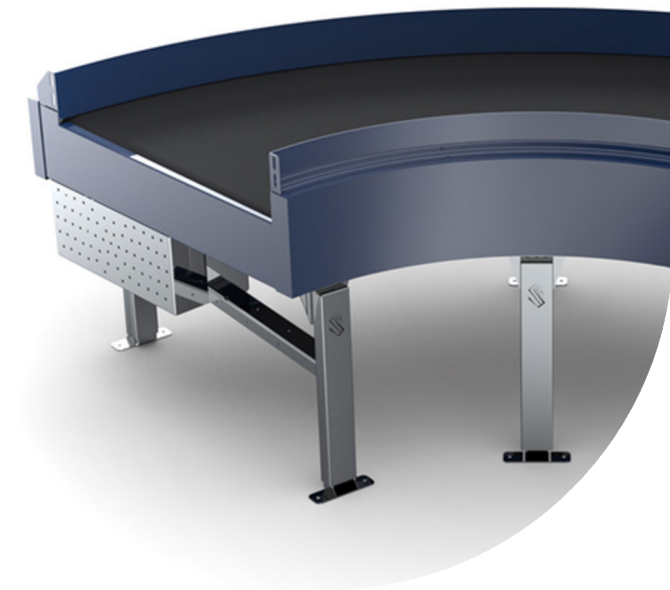
Straight Belt Conveyor



Curve Belt Conveyor



Merge Belt Conveyor



Roller Conveyors

Designed with versatility in mind, these conveyors feature a modular construction for easy part replacement, minimizing downtime and maintenance costs. This flexibility keeps operations agile and responsive to changing production demands. Built from premium-grade materials, our roller conveyors ensure durability and cost savings by reducing the need for frequent maintenance. This leads to lower labor expenses and optimized operational budgets.



Roller Conveyor



Belt Driven Roller Conveyor



Diverter Equipment

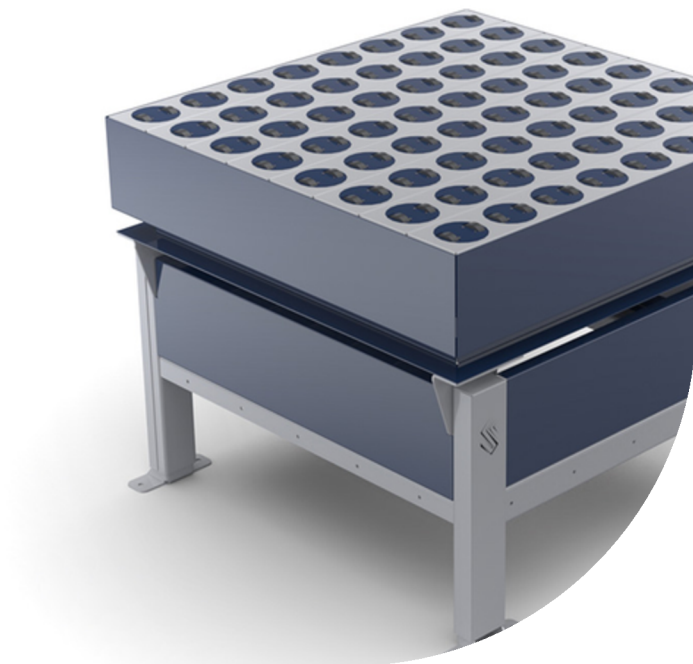
Sortcon's diverter solutions enhance efficiency and control in production and packaging lines by enabling smooth product redirection. Especially, the pop up conveyor systems and ball transfer units are designed to transfer products in different directions without stopping the main flow. These systems activate automatically without the need for operator intervention, ensuring uninterrupted product movement. Developed for applications requiring high speed and precision, diverter systems help save time and significantly boost overall line productivity.



Pop-Up Roller Conveyor



Swiveler Wheel Diverter



Manual Equipment

Engineered for enhanced maneuverability, including powered flexible conveyor options, it navigates dynamic environments with ease. Adjustable height functionality seamlessly integrates into various workflows, enhancing operator ergonomics. Leveraging these features, our flexible conveyor systems revolutionize material handling processes for sustainable growth and operational excellence in the modern industrial landscape.



Manual Telescopic Conveyor



Flexible Conveyor



Castor Deck



X-Ray Conveyor



After Sales

We stand by our customers even after the sale.

Sortcon After Sales was created to professionally manage the after-sales support processes for our customers.

You can contact the Sortcon support teams anytime through the links on our website or by creating a ticket online.



Customer Partners

We regard customers as our most valuable partners and have established long-term cooperative relationships with many customers.



Main References

trendyol.com

DHL

MNGkargo

YK
yurtiçikargo

interlogistica



Thank You!

