



---

Efficiency at the heart of science:  
Innovating your projects with Sortcon







## About Us

At Sortcon, we understand that optimizing your intralogistics operations is crucial to your business success. Our range of innovative products are designed to streamline your warehouse processes, reduce labor costs and increase efficiency. With our cutting-edge technology and deep scientific expertise, we can help you identify the bottlenecks in your operations and provide customized solutions to overcome them.

Sortcon is your trusted partner for intralogistics excellence with 150+ employees and 13,000sqm. manufacturing site.

### TABLE of CONTENT

3   About	16   Standard Roller Conveyor
5   Mission/Vision	18   Belt Driven Roller Conveyor
6   Manual Telescopic Conveyor	20   Roller-Lifting Equipment
8   Flexible Roller Conveyor	22   Flyer Sorting System
10   Standard Belt Conveyor	24   Versatile Dispenser Equipment
12   Curve Belt Conveyor	26   Pop-Up Roller Conveyor
14   Merge Belt Conveyor	28   Standard Telescopic Conveyor

## Why ?

At Sortcon, we're more than just a component provider. We're a partner that's committed to helping your business succeed.

We work closely with our clients to understand their unique needs, challenges and we tailor our solutions to meet those needs.

Sortcon team's installer, commissioner and maintainer background gives us common perspective with our customers.

So, if you're looking for a trusted partner in the intralogistics industry, look no further than Sortcon. Contact us today to learn more about how we can help your business thrive.



## Mission

At Sortcon, our mission is to leverage our scientific expertise and cutting-edge technology to revolutionize the intralogistics sector. We are dedicated to providing businesses of all sizes with tailored solutions that optimize their intralogistics processes, streamline operations and increase efficiency and productivity. Through our commitment to scientific innovation, collaboration and a customer-centric approach. We strive to deliver superior results and enable our clients to stay ahead of the competition. Our goal is to be a trusted partner for businesses seeking to enhance their intralogistics capabilities and achieve their full potential in a rapidly evolving market.

## Vision

At Sortcon, we are committed to revolutionizing the intralogistics sector through state of the art science, a relentless focus on efficiency and productivity. Our vision is to be a leader in the industry, leveraging our deep sector expertise and the latest advancements in automation, robotics and software to streamline operations, reduce costs and deliver superior results for our customers. Through our unwavering commitment to innovation, collaboration and a customer-centric approach. We strive to enable businesses of all sizes to optimize their intralogistics processes and achieve their full potential.

## Manual Telescopic Conveyor

### Price Advantage

It has unbeatable price advantage compare with automatic telescopic conveyors. Manual Telescopic Conveyor remains cost-effective, making it accessible to businesses of all sizes.

### Efficiency Redefined

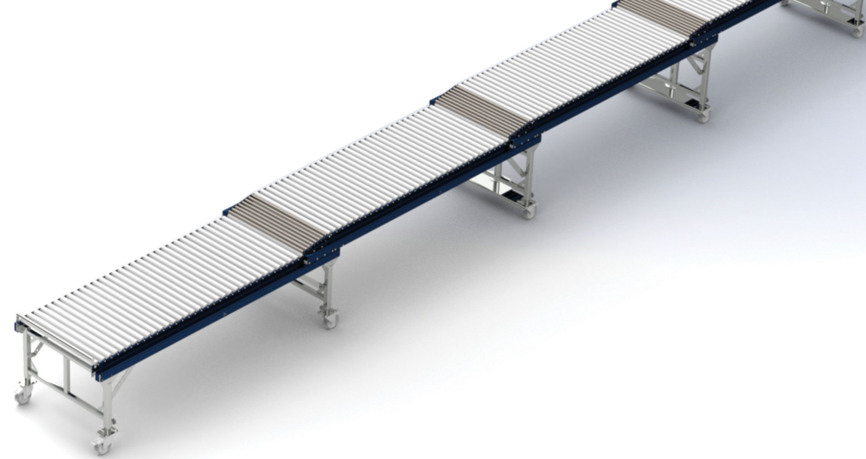
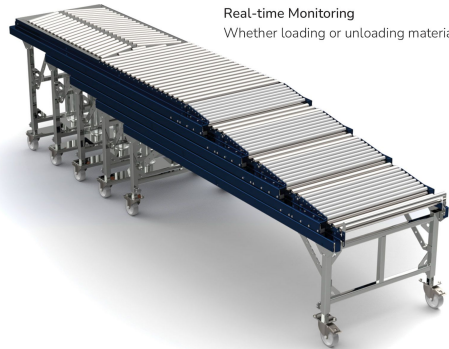
The Manual Telescopic Conveyor offers tailor-made dimensions, allowing businesses to customize the system to fit their specific space constraints perfectly.

### Safety First

In today's dynamic warehouse environments, agility is key. The Manual Telescopic Conveyor is designed for easy movement, allowing operators to transport materials swiftly.

### Real-time Monitoring

Whether loading or unloading materials, operators can easily adjust the conveyor height to match the task at hand.



### Technical Data

Standart Roller Diameter	Ø40 - Ø50 mm
Standart Widths	600,700,800,900,1000,1200 mm
Standard Lengths	From 4500 mm to 15000 mm
Standart Hights	From 800 mm to 1200 mm
Roller Material	Zinc, Pvc Coated (Optional)
Roller Pitch	70 mm





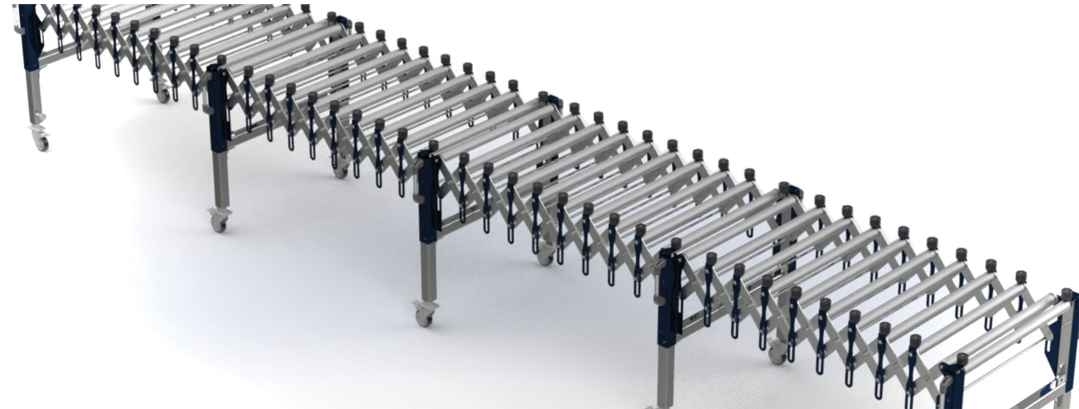
## Flexible Roller Conveyor

### Price Advantage

Flexible conveyor remains cost-effective, making it accessible to businesses of all sizes.

### Tailor-Made Dimensions

Flexible Conveyor offers tailor-made dimensions, allowing businesses to customize the system to fit their specific space constraints perfectly.



### Ease of Movement

In today's dynamic warehouse environments, agility is key. Flexible Conveyor is designed for easy movement, allowing operators to transport materials swiftly.

### Adjustable Height

Whether loading or unloading materials, operators can easily adjust the conveyor height to match the task at hand.

## Technical Data

Standart Roller Diameter	Ø40 - Ø50 mm
Standart Widths	400,500,600,700,800,900,1000,1200 mm
Standard Lengths	1000 mm to 2400mm , 1400 mm to 3000 mm , 1500 mm to 3500 mm, 2000 mm to 4500 mm , 2200 mm to 5000 mm , 2600 mm to 6000 mm
Standart Heights	500 mm to 750 mm , 600 mm to 900 mm , 700 mm to 1100 mm
Roller Material	Zinc, Pvc Coated ( Optional )
Roller Pitch	160 mm



## Standard Belt Conveyor

### Center-Stay Design

Our conveyor belt stays perfectly centered, ensuring precise material handling and minimizing the risk of spillage or misalignment. Also, it helps to maintenance period of your system and makes time saving during production phase of your projects.

### Vibration Protection

Say goodbye to disruptions caused by vibrations. Our conveyor is engineered for smooth and stable operation, even in the most demanding environments.

### Enhanced Productivity

Experience uninterrupted workflow, reduced maintenance, and increased throughput with our advanced design.

### Quality and Durability

Built to last, our conveyor is designed with quality materials and craftsmanship, offering long-term value for your operations.

### Technical Data

Conveyor Length	1000 mm - 8000 mm
Belt Width	up to 1500 mm
Conveyor Speed	2 m/s
Load Capacity	up to 50 kg/m





## Curve Belt Conveyor

### Extreme Strength

Our Curve Conveyor is engineered to handle heavy loads, ensuring it stands the test of time.

### Easy Installation

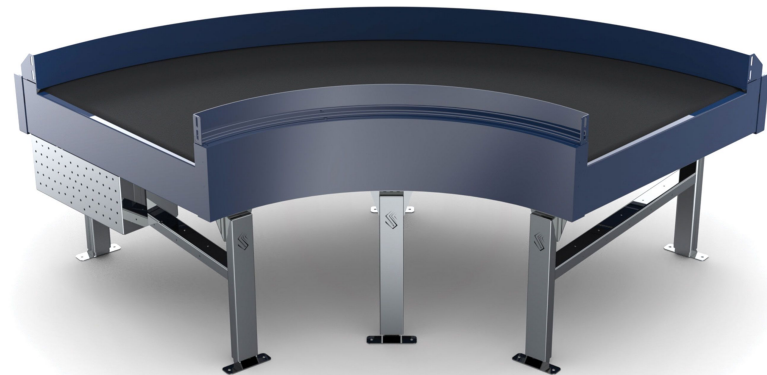
Save time and resources with a straightforward installation process.

### Seamless Integration

Connect effortlessly with other system components, streamlining your operations.

### Center Stay Belt Design

Designed for stability and efficiency, keeping your materials on track.



### Technical Data

Conveyor Speed	2 m/s
Load Capacity	up to 50 kg/m
Conveyor Angles	30° - 90°
Inner Radius	300 mm - 1000 mm
Belt Widths	300 mm - 1500 mm

### Technical Data

INNER RADIUS	BELT WIDTH	ANGLE
300	300, 400	90°
400	300, 400, 500	90°
500	400, 500, 600	90°
600	400, 500, 600, 700	45°, 90°
700	500, 600, 700, 800	45°, 90°
800	600, 700, 800, 900	45°, 60°, 90°
900	700, 800, 900, 1000	30°, 45°, 60°, 90°
1000	800, 900, 1000, 1100	30°, 45°, 60°, 90°

## Merge Belt Conveyor

### Extreme Strength

Built to withstand the toughest challenges, ensuring longevity and reliability.

### Easy Installation

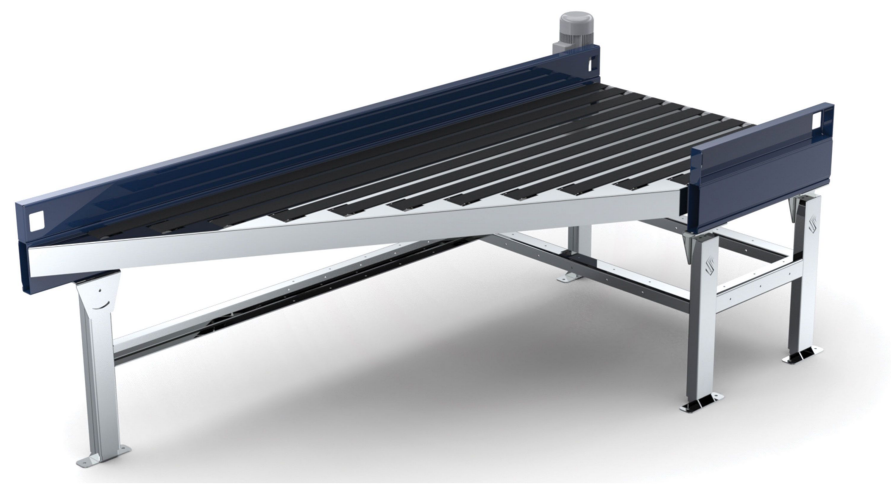
Seamlessly integrate it into your workflow, minimizing downtime.

### Connect at Any Angle

From 30 to 45 to 60 degrees, our equipment adapts to your needs with ease.

### Strong Structure

A robust design that's built to perform under pressure.



### Technical Data

Conveyor Speed	up to 2 m/s
Belt Width	up to 1500 mm
Conveyor Angles	30°- 45°- 60°
Load Capacity	up to 50 kg/m





## Standard Roller Conveyor

### Modular Design

Easily swap or replace damaged parts, minimizing downtime and maintenance costs. Our conveyor adapts to your evolving needs.

### High-Quality Materials

Crafted with precision and built to last, our conveyor is engineered from top-quality materials for long-term reliability.

### Versatile Options

Choose from motorized or un-motorized versions, modular for flexibility, or solid for heavy-duty tasks – we have a solution for every application.

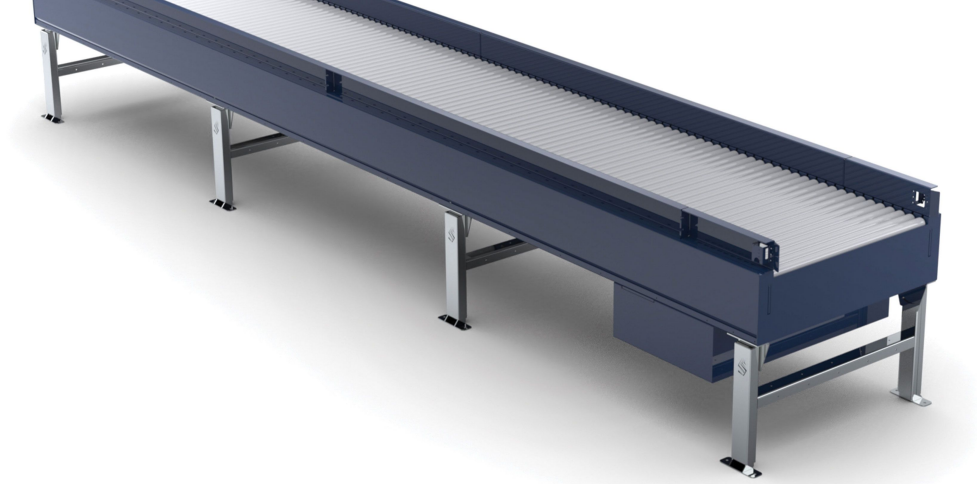
### Seamless Performance

Experience uninterrupted material handling with smooth roller movement, enhancing your productivity.

### Technical Data

Conveyor Length	1000 mm - 8000 mm
Belt Width	up to 1500 mm
Conveyor Speed	2 m/s
Load Capacity	up to 50 kg/m





#### Perfectly Fit for Narrow Spaces

Space constraints should never limit your efficiency. Our roller conveyor is designed to fit perfectly in narrow spaces.

#### Low Maintenance Time and Cost

Spend less time and money on upkeep and more time doing what you do best – keeping your operations running smoothly.

#### Belt Driven

Rollers will be driven by hidden belt conveyor.

#### Technical Data

Conveyor Length	1000 mm - 8000 mm
Belt Width	up to 1500 mm
Conveyor Speed	2 m/s
Load Capacity	up to 50 kg/m

## Belt Driven Roller Conveyor

#### Vertical Roller Change Ability

You have the flexibility to change rollers vertically. You may easily remove the rollers by lifting them up from the conveyor.





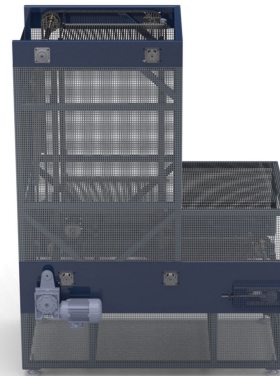
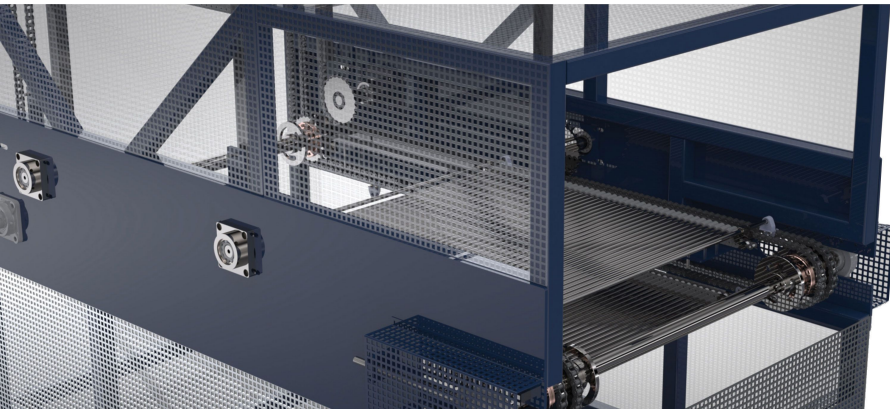
## Roller-Lifting Equipment

### Modular Design

Effortless installation and maintenance. Our conveyor adapts to your needs, reducing downtime and maximizing efficiency.

### Robust Motor and Frame

Engineered for the long haul, our conveyor boasts a powerful motor and sturdy frame design that's built to last.



### Speed and Power

Experience lightning-fast material transport and handle heavy loads with ease, improving your overall productivity.

### Precision Performance

Whether it's manufacturing or distribution, our elevator conveyor ensures smooth and precise handling every time.

## Technical Data

Conveyor Heights	2000 mm - 10000 mm
Belt Width	up to 1500 mm
Conveyor Speed	1 m/s
Load Capacity	up to 10 parcels - at the same time
Load Per Tray	up to 50kg





## Flyer Sorting System

### Increasable Chute Option

According to the size of your business, the number of sorting chutes can be increased.

### Wide Product Range

Sortcon FSS can handle envelope type packages and the parcels less than 15kg.

### Price Advantage

Sorter Reduces your sorting cost by approximately 60%.

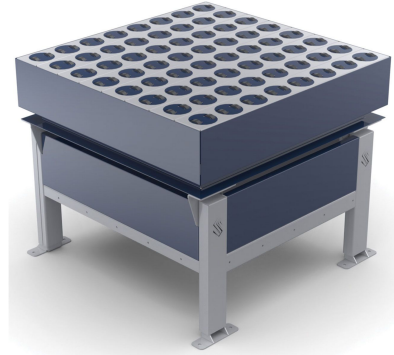
### Reduce Your Operation Cost

Only one personnel can cover your flyer parcel sorting process.

## Technical Data

Sorting Capacity	up to 4000 pcs/h
Load Height	10 mm - 300 mm
Load Weight	up to 15 kg
Load Limit	Between 100 mm to 350 mm





## Versatile Dispenser Equipment

### Way Parcel Separation

Say goodbye to bottlenecks! Our equipment excels in sorting parcels efficiently.

### Extreme Strength

Built to last, ensuring durability even in the most demanding environments.

### Easy Installation

Seamlessly integrate it into your existing setup with minimal downtime.

### Connect with Ease

Effortlessly link it with other system components to create a seamless workflow.

### Technical Data

Direction Angles	±90°
Unit Speed	up to 1,5 m/s
Load Capacity	up to 50 kg/m



## Pop-Up Roller Conveyor

### Simplified Setup

Say goodbye to complex air compressor installations. Our conveyor is ready to roll with a plug-and-play design.

### Cost Savings

Eliminate the ongoing costs and maintenance associated with air compressors, making it a cost-effective choice.



### Efficiency Boost

Experience uninterrupted material handling operations, increasing productivity, and reducing downtime.

### Environmentally Friendly

By going compressor-free, you're reducing your carbon footprint and contributing to a greener future.

### Technical Data (One Unit)

Unit Length	up to 2000 mm
Unit Width	up to 1500 mm
Conveyor Speed	up to 1 m/s
Load Capacity	up to 50 kg/m



## Standard Telescopic Conveyor

### Safety First

Fully operator protection, all moving parts are covered.

### Real-time Monitoring

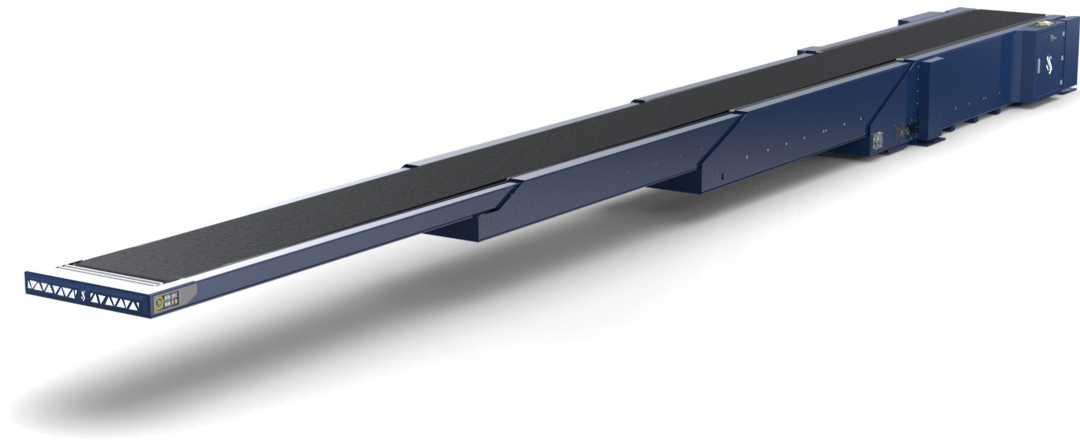
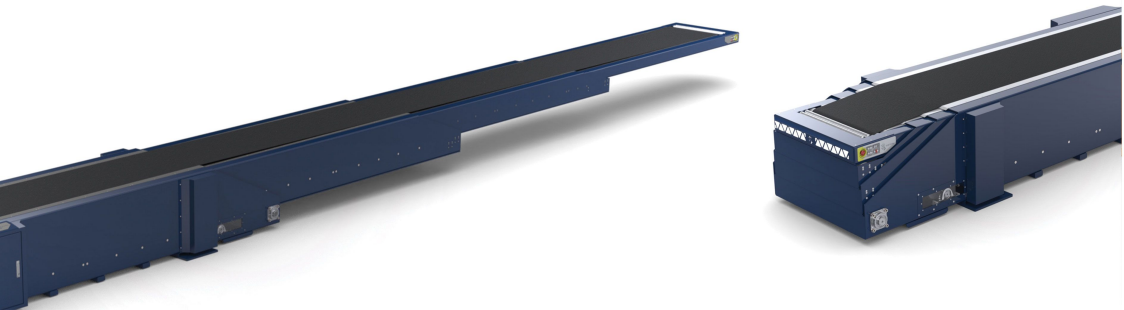
Gain valuable insights with remote diagnostics and monitoring.

### Efficiency Redefined

Save time and effort with easy remote operation, improving your workflow efficiency.

### Remote Control Option

Seamlessly adjust conveyor extension and height from your mobile device, ensuring precise positioning.



### Technical Data

Main Body Width	3 BOOM			4 BOOM		
	BELT WIDTH + 400 mm			BELT WIDTH + 500 mm		
Main Body Length	4000 mm	5000 mm	6000 mm	4000 mm	5000 mm	6000 mm
Extension Length	4000 mm	5000 mm	6000 mm	6000 mm	10000 mm	12000 mm
Total Max. Length	8000 mm	10000 mm	14000 mm	10000 mm	15000 mm	18000 mm
Load Capacity	up to 60 kg/m			up to 50 kg/m		
Speed	up to 1m/s					
Belt Width	600 mm - 800 mm - 1000 mm					

SORTCON  
SCIENCE OF INTRALOGISTICS



Headquarter: 14R, 1201/1 Street, İzmir, 35170, TR

Germany Office: Bucher Str. 14, 89290 Buch, DE

Manufacturing Site: 489, Merkez Street, Muğla, 48200, TR

Call Center

+90 232 459 59 17

Website

[www.sortcon.com](http://www.sortcon.com)

Email

[info@sortcon.com](mailto:info@sortcon.com)